



# EXHIBIT GUIDE



## Joint Conference on T&E Support to Prototyping and Experimentation

5 – 8 February 2024  
Albuquerque, New Mexico

### Exhibit Hall Hours:

Tuesday 0700 - 1600  
1730 - 1930

Wednesday 0700 - 1600



## Acme Heat and Light

[www.acme.us.com](http://www.acme.us.com)

Acme Heat and Light has entered its ninth year of breaking down barriers to practical, deployable Directed Energy. Acme has world-leading expertise in reducing System Weight and Power (SWaP) for high-energy laser systems. For example, Acme self-funded the development of and now manufactures the Multi-Role Tactical Laser (MRTL), in initial production and Operator Test&Eval. MRTL is the first known single-human-portable stand-alone HEL with useful range, power, magazine, recovery time, and manufacturability.



## Active Optical Systems (AOS)

[www.aos-llc.com](http://www.aos-llc.com)

Active Optical Systems (AOS) is a world leader in adaptive optics, beam control components, and sub-systems. Located in Albuquerque, New Mexico, AOS provides products to defense and aerospace customers including deformable mirrors, fast steering mirrors, wavefront sensors, HWAS, AO software, and controllers. All our products are manufactured in house in the US.



## ARKA - Danbury Mission Technologies

[www.arka.org](http://www.arka.org)

ARKA Group, L.P. is a fully integrated mission partner providing world-leading enabling capabilities with an unrivaled reputation for excellence. ARKA's space and defense business provides intelligence, surveillance, and reconnaissance solutions, supporting customer requirements for ISR and HEL optics, windows, beam expanders, laser warning systems, coatings, EMI gridding, communications, software, robotics and sensors. In our Danbury, Connecticut, facility we produce and coat optics and windows from 30cm to 3.5 meters using electrically conductive and optical coatings supporting ISR and HEL requirements. We also design and manufacture laser warning systems, providing world-class platform survivability and protection with leading-edge technology to defeat continuously evolving threats.



## Astro Haven Enterprises (AHE)

[www.astrohaven.com](http://www.astrohaven.com)

Astro Haven Enterprises (AHE) and Cartesius Industrial Solutions (<https://cartesius.com/>) stand alone when it comes to advancing the technology of sensor/system enclosures from our design innovation, 3-D modelling, CNC machining, laser scanning metrology, and our state-of-the-art composite fabrication. The "X" dome family features independent servo-driven shutters. The 16-X2T-2D sits on the Astro Haven Optics trailer (AHOT). The 16-X2T-2D AHOT features up to 26 servo drives and will travel on the roughest terrain and then collapses to go down the highway at any speed (and I mean any speed). When your mission demands more than a roof, remember no other company is designing a system solution to optimize the performance of your instrumentation or take down the road "leaving only your tire prints behind".



## BlueHalo

[www.bluehalo.com](http://www.bluehalo.com)

BlueHalo is purpose-built to transform the future of global defense, providing industry-leading capabilities in the areas of Space, C-UAS and Autonomous Systems, Electronic Warfare & Cyber, and AI/ML. The company develops and brings to market next-generation capabilities to support customers' critical missions and national security. Learn more at <http://www.bluehalo.com>



## Defense Technical Information Center

[www.discover.dtic.mil/](http://www.discover.dtic.mil/)

As the DoD's central authority for collecting and disseminating defense scientific and technical (S&T) information, DTIC facilitates innovation across the DoD research and engineering enterprise. Through DTIC's public (<https://discover.dtic.mil/>) and access-controlled hubs (<https://www.dtic.mil/>), DTIC is the only one-stop source offering access to DoD research, including thousands of DE technical reports.



## Directed Energy Systems Integration Laboratory

[DESIL\\_7028@us.navy.mil](mailto:DESIL_7028@us.navy.mil)

Directed Energy Systems Integration Laboratory-NSWC Port Hueneme Division, California-United States Navy DESIL Provides in-service engineering, test and evaluation, and integrated logistics support for Directed Energy systems with access to a coastal facility on Department of Defense Point Mugu Sea Range



## Empower RF Systems

[www.empowerrf.com](http://www.empowerrf.com)

Empower RF Systems sets the bar for extreme high-power COTS CW & Pulse SSPAs. Pulse capabilities include long pulse, high duty cycle transmitters deployed in effects testing and Nonlinear Transmission Line research. More broadly, Empower is an established HPM provider to the DOD for EW, Threat Simulation and Radar applications.



## Teledyne FLIR

[www.teledyne.com](http://www.teledyne.com)

FLIR cameras have proven their value in critical government and commercial test environments for decades. Trusted by defense, university, and commercial organizations worldwide, Teledyne FLIR continues to build thermal imaging cameras with greater accuracy, faster speeds, and improved resolution, as well as software applications that get you to first measurements faster than ever before.





## MZA Associates Corporation

[www.mza.com](http://www.mza.com)

MZA Associates Corporation (MZA) is a veteran-owned, small business headquartered out of Albuquerque, New Mexico that specializes in the modeling, simulation, and analysis (MS&A), design, development, engineering, and testing of advanced optical and control systems for High Energy Laser (HEL), Directed Energy (DE) and surveillance systems (ISR). MZA has provided more than 30 years of support to a broad range of DoD research organizations in the development of advanced weapons and surveillance systems. MZA's staff includes some of the world's experts in the fields of advanced beam control analysis and design, beam control component and system development, aero-optical and aero-mechanical effects, atmospheric propagation, and laser engagement analysis.



## Nokomis, Inc.

[www.nokomisinc.com](http://www.nokomisinc.com)

Nokomis is dedicated to development of advanced capabilities across the DoD that leverage unintended RF emissions through state-of-the-art RF sensors with unparalleled (-170 dBm) sensitivity for device exploitation. This technology provides unrivaled capability for exploiting simple and complex systems for Battle Damage Indicators for Directed Energy Weapons, identification/tracking, and advanced spectrum monitoring.



## SemQuest

[www.semquest.com](http://www.semquest.com)

Founded in 2000, SemQuest enables the test and evaluation of weapon systems by developing and delivering technologies that make accurate measurements of military defense systems. SemQuest specializes in building a wide variety of high-energy laser target boards as well as state-of-the-art hit detection systems.



## Texas A&M - BCDC

<https://bcdc.tamus.edu/>

The George Bush Combat Development Complex (BCDC) at TAMUS's RELLIS research campus, is a 2300+ acre range facility supporting Directed Energy Research, Development, Test, and Evaluation (DE RDT&E), in conjunction with the Innovative Proving Ground (IPG) and Ballistics, AeroOptics and Materials Test Range (BAM) through atmospheric environments and open-air testing.

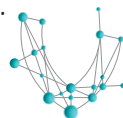


BUSH COMBAT  
DEVELOPMENT  
COMPLEX

## Verus Research

[www.verusresearch.net](http://www.verusresearch.net)

Verus Research is an elite team of scientists and engineers with compelling experience in advanced electromagnetic simulation, microwave system design, nuclear systems and radiation effects, multidisciplinary systems integration, and more. Verus Research delivers the ideal combination of critical thinking, expertise, and technology to provide tailored answers for your specific needs.

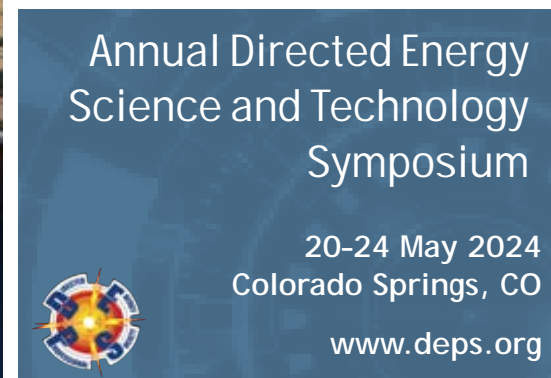
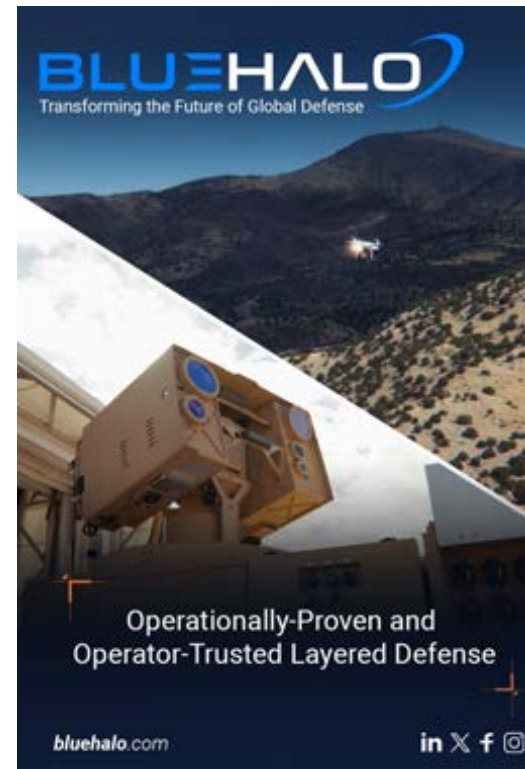


verus  
RESEARCH

## Zygo

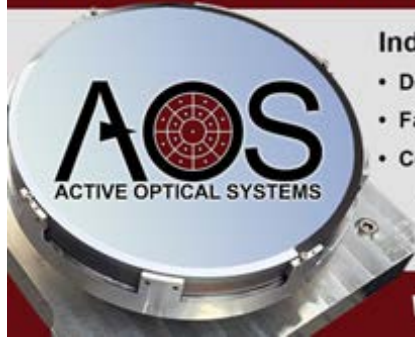
[www.zygo.com](http://www.zygo.com)

Zygo is a global leader in the design and manufacture of advanced optical metrology systems and ultra-precise optical components and assemblies. Our mission is to enable customer success by delivering innovative precision optical and metrology solutions that exceed expectations.





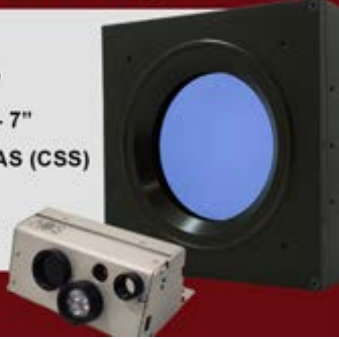
**Adaptive Optics for Defense, Aerospace and Commercial Applications**



**Industry Leading**

- Deformable Mirrors (DM) – 1" - 8"
- Fast Steering Mirrors (FSM) – 1" - 7"
- Consolidated Sensor Suite / HWAS (CSS)
  - Controllers
  - Wavefront Sensors (WFS)

[www.aos-llc.com](http://www.aos-llc.com)



**AMPLIFIER TECHNOLOGY**

for Domination of the **Electromagnetic Battlespace**

Empower's amplifiers are supporting mission critical testing and training on open air ranges



[www.EmpowerRF.com](http://www.EmpowerRF.com)

- HF/VHF/UHF ★
- L/S/C/X Bands ★
- CW, Pulse ★



Performance Optimization - when you need more than a roof

Mobile or Static - Servo or KISS



Down the road at any speed to fully deployed... in 10 minutes flat!!

Static enclosures to 27-feet and beyond



Make Critical Decisions with Confidence in the Lab or the Open Air Test Range

Learn more or request a demo



**CREATING SOLUTIONS THAT MATTER**

- SOFTWARE DEVELOPMENT AND APPLICATIONS
- SYSTEM ENGINEERING AND DEVELOPMENT
- DIRECTED ENERGY TEST AND EVALUATION
- APPLIED NUCLEAR RESEARCH
- SPACE AND AUTONOMY
- ELECTRONIC WARFARE
- APPLIED ELECTRONICS

WELCOME TO VERUS RESEARCH.

[verusresearch.net](http://verusresearch.net)



505-244-8500 / 6100 Uptown Blvd NE Suite 260 / Albuquerque, NM 87110 / [info@verusresearch.net](mailto:info@verusresearch.net)



**Leverage Your Expertise. Transform Tomorrow.**

[GTRI.gatech.edu](http://GTRI.gatech.edu)

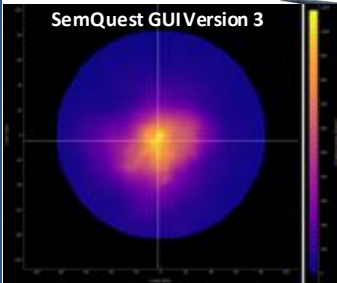
At GTRI we develop advanced technology solutions and large-scale system prototypes to address the most difficult problems in national security, economic development, and the overall human condition.

Explore our unique research capabilities at [GTRI.gatech.edu](http://GTRI.gatech.edu).



# SemQuest

**About SemQuest** Founded in 2000, SemQuest enables the test and evaluation of weapon systems by developing and delivering technologies that make accurate measurements of military defense systems. SemQuest specializes in building a wide variety of high-energy laser target boards as well as state-of-the-art hit detection systems.



SLIM 8 on an E1250



SLIM 8



ALIEN Target Board Pods



SLIM 5



FOC CaMEO Pods on a BQM-34S



BATS On a Broadsword UAS

**SemQuest Contact Info:**

**Address**

320 N. Academy Blvd.  
Ste. 301  
Colorado Springs, CO 80909

**Website:** [semquest.com](http://semquest.com)

**Phone:** (719) 573-4301



## BUSH COMBAT DEVELOPMENT COMPLEX



Hypersonic Systems



THE TEXAS A&M UNIVERSITY SYSTEM

BAM Range

## BALLISTIC, AERO-OPTICS, and MATERIALS RANGE

DESIL General Support: [DESIL\\_7028@us.navy.mil](mailto:DESIL_7028@us.navy.mil)

# DESIL

DIRECTED ENERGY SYSTEMS INTEGRATION LABORATORY



## NSWC Port Hueneme Division

**Mission:** Provide in-service engineering, test and evaluation, and integrated logistics support for Directed Energy systems with access to a coastal facility on Point Mugu Sea Range